



Installation Manual

Transmission Flexplates

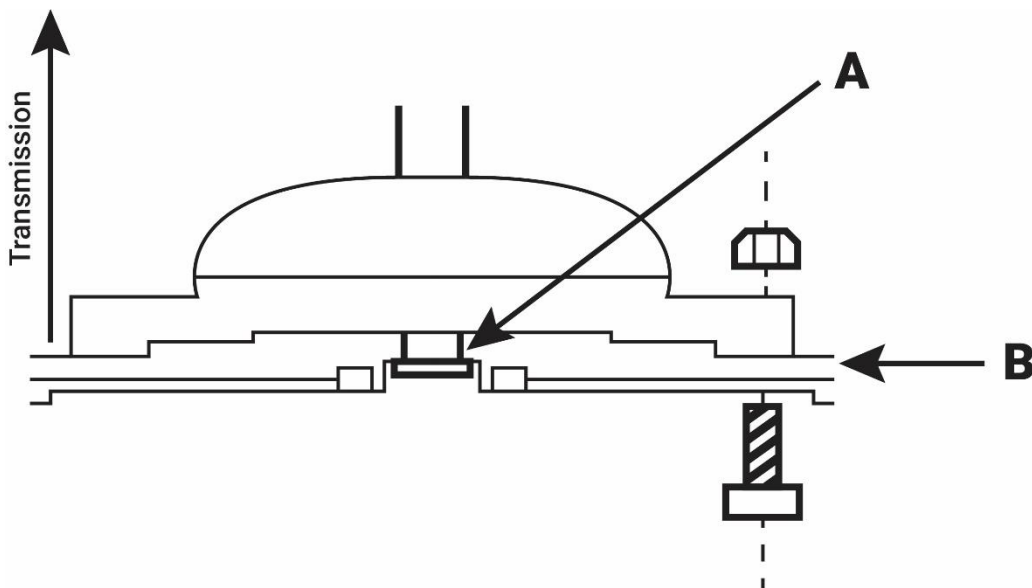
WARNING: PLEASE READ ALL INSTRUCTIONS BEFORE PROCEEDING. RTS WILL NOT BE RESPONSIBLE FOR ANY DAMAGE AS A RESULT OF THE INCORRECT INSTALLATION OF THIS PRODUCT. IT IS RECOMMENDED THAT A QUALIFIED AUTOMOTIVE TECHNICIAN PERFORMS THIS INSTALLATION.

Typical Installation

The transmission torque converter needs to have a $1/8'' - 3/16''$ gap between the flexplate and the converter mounting pads when the converter is fully seated in the transmission.

If you have zero gap, you need to add a block plate for your specific size to attain the proper clearance.

If the gap is beyond the recommended spec, you can add Grade 8 washers between the converter pads and the flexplate to take up the extra clearance.



- A. When installing converter, the converter should fit $3/16'' - 1/4''$ into the crank pilot.
- B. In addition, there should be $1/8'' - 3/16''$ of clearance between the flywheel and converter lugs before the converter is bolted up and pushed all the way back into transmission.